



LIQUID STORAGE TANKS



510BBL SIDE STEP STORAGE TANKS

Features & Benefits

V.E. Enterprises new Side Step storage tank is in a class by itself, focusing on both safety and ease of use. Standard features include a front 'notched' stairway with fixed handrails leading to a top platform, 4" drains front and rear, a 3" front fill line, smooth walls with external channel supports and a "V" bottom floor for ease of cleaning and drainage.

Tank Specifications

- 510bbl capacity
- Smooth interior walls
- Length: 44' 2"
- Width: 8' 6"
- Sides: 1/4" SA-36 steel
- Top: 1/4" SA-36 steel
- Floor: 1/4" SA-36 steel
- Hutch, 7700 or equivalent
- Axle: Round, 22,500 lbs. with automatic slack adjusters
- Wheels: BUDD type, unimount
- Tires: 11 x 22.5 bias ply
- Brakes: D.O.T. approved, with air brake system
- Front / Side Manways: 22" V.E. dome lids
- Front Fittings: 4" flanged nozzle
- Fill: 3" at front
- Front Connection: 4" flanged nozzle w/ 4" flanged butterfly valve
- Rear Drains: 4" flanged with butterfly valve
- Side Stair: steel grip strut to platform
- One color DuPont Imron DTM paint



Interior view of smooth walls and "V" bottom

Options

- Carboline two-part epoxy coating
- Inside or outside manifolds with butterfly valves
- Additional manways
- Gel or steam lines
- Sign plates
- Other valves, fittings or modifications to customer specifications



SMOOTH WALL

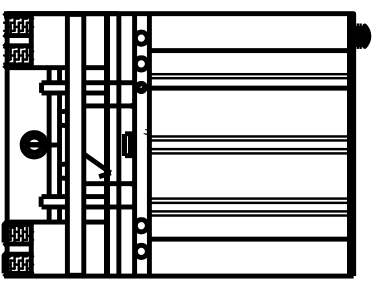
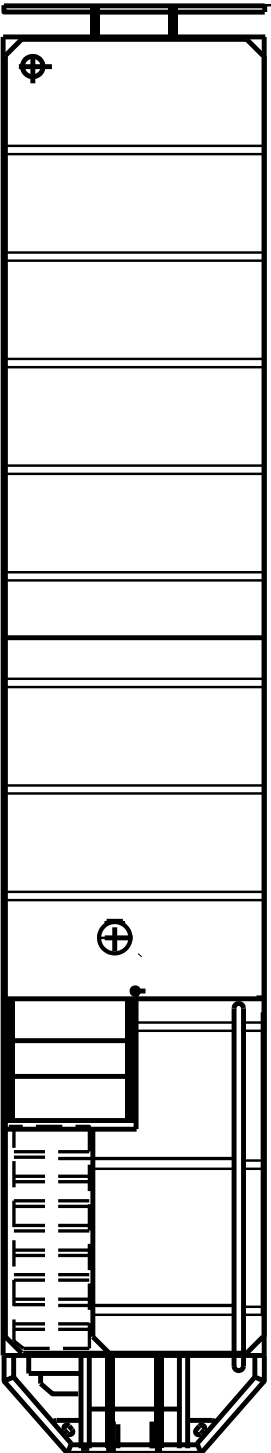
HERITAGE TRUCK EQUIPMENT

1600 EAST WATERLOO RD • AKRON, OHIO 44306

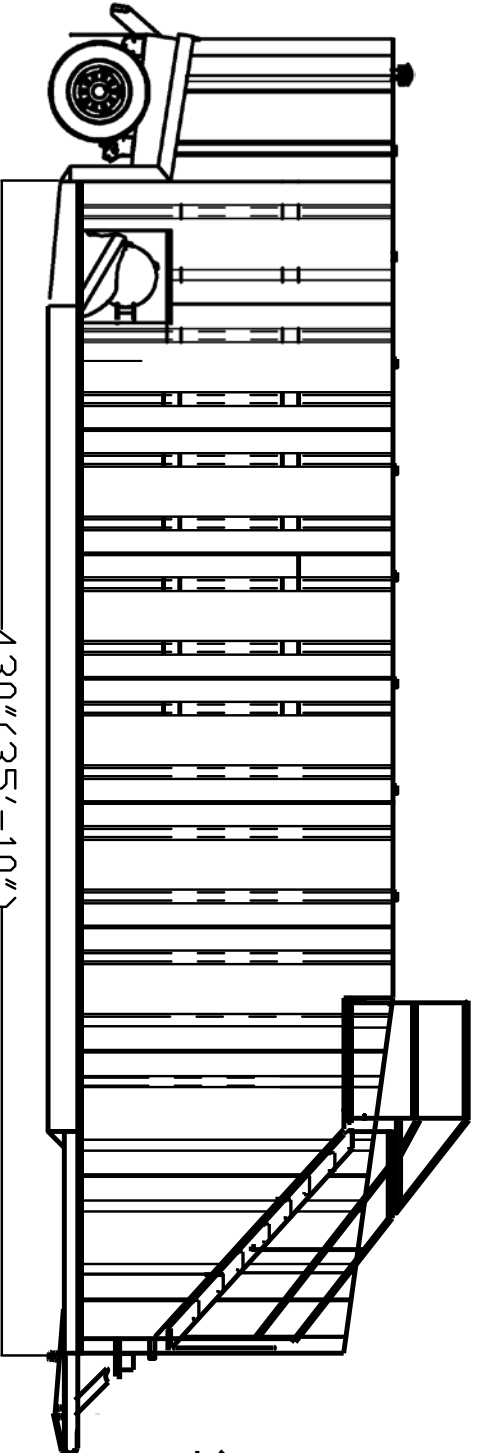
330-699-4491 • www.heritagetruck.com

330-949-3428 cell • don@heritagetruck.com

530 5/8" (44'-2 5/8")



430" (35'-10")



128 3/4"

